

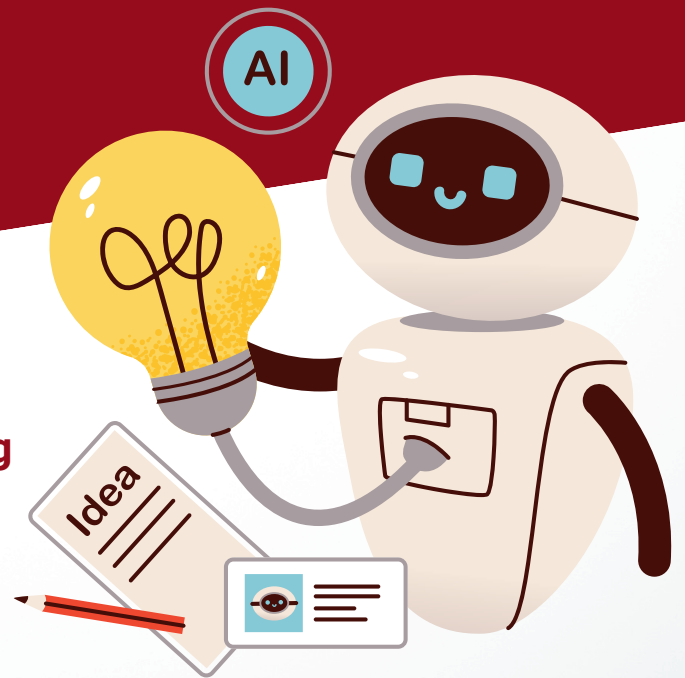


Ei ASSET

AI & Digital Thinking

AI & Digital Thinking: Your Gateway to AI-Ready Thinking

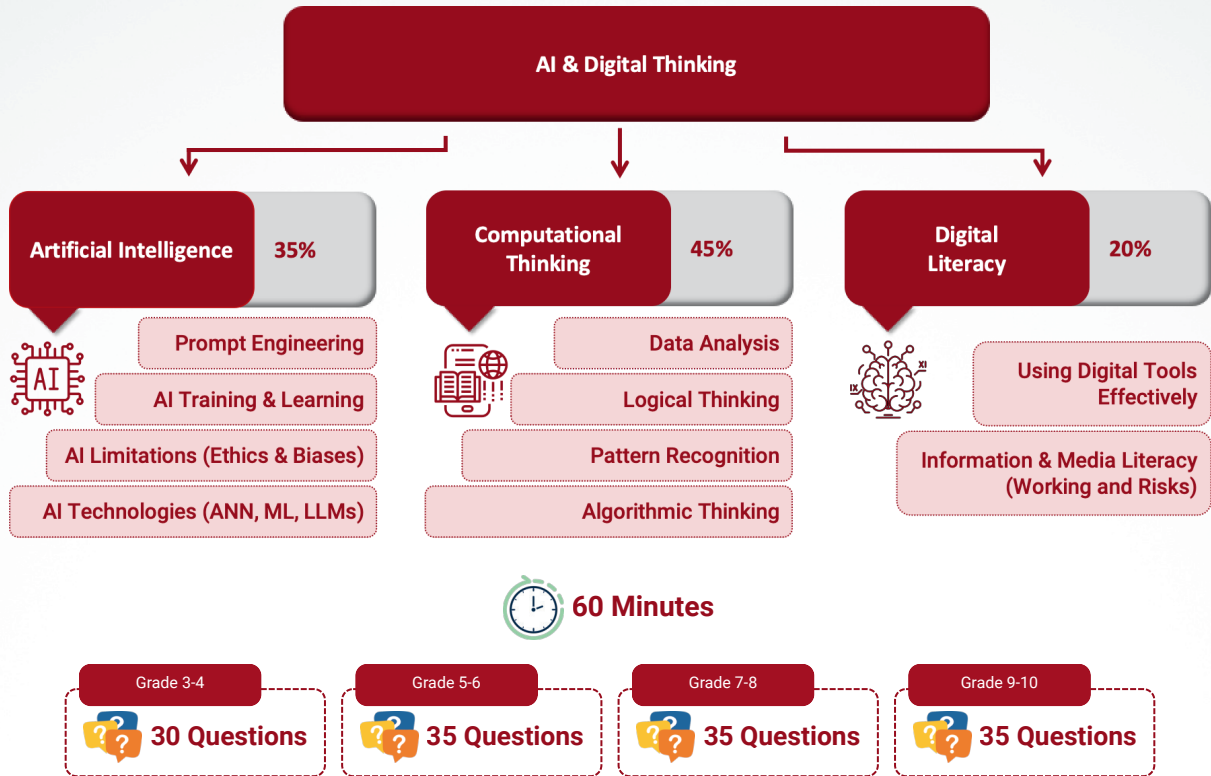
- Think logically and solve problems with data and patterns
- Equip students to use AI tools for learning and everyday problem-solving
- Use digital tools and information effectively and responsibly



Technology changes
#ThinkingIsFutureProof

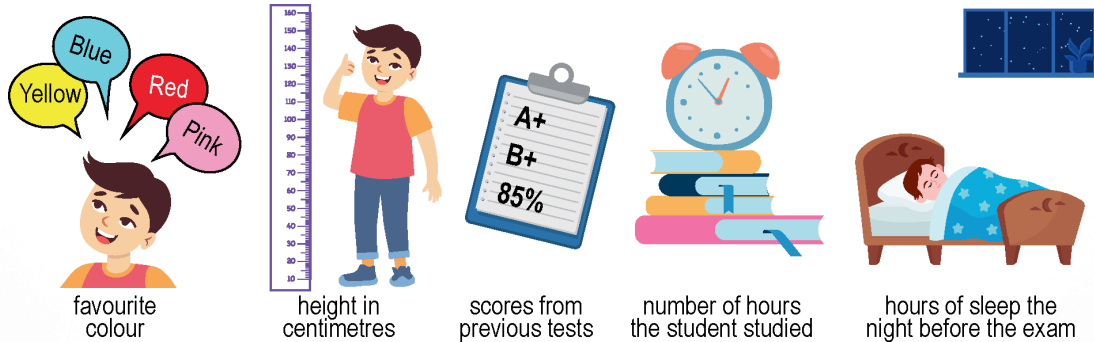
www.ei.study

Ei ASSET AI & Digital Thinking Tests Future-Ready Skills



Sample Question 1: AI Training & Learning

Marsh is training an AI robot to smartly guess the final test scores of his classmates. The AI robot has the following information about each student:



Marsh removed some information that was not useful for the AI robot to smartly guess the final test scores. Which of the following information did Marsh REMOVE?

- A**
- Height in centimetres
 - Number of hours the student studied

- B**
- Previous test scores
 - Number of hours the student studied

- C**
- Favourite colour
 - Hours of sleep the night before the exam

- D**
- Favourite colour
 - Height in centimetres

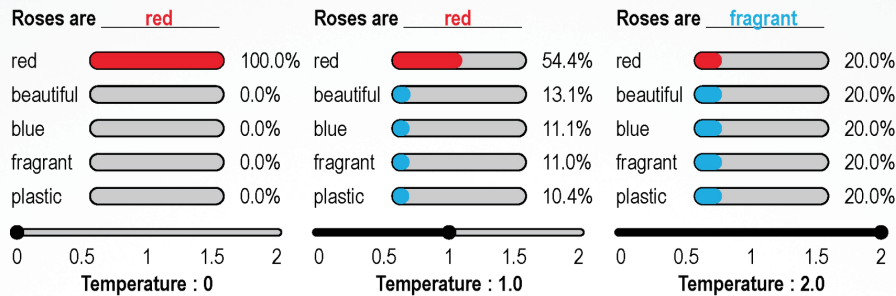
Explanation: A student's favourite colour and height don't affect their performance in a test.

CORRECT ANSWER: Option D.

Sample Question 2: AI Technologies

In AI language models, there is a 'temperature' setting that controls how predictable or creative the model's output is.

Suppose the model is asked to complete this sentence: "Roses are ____."



Suppose you want the model to create a poem with unique or surprising phrases, which temperature should you set it to?

A Temp = 0.2, because it gives the highest chance for rare words.

B Temp = 0.7, because it will ignore the most likely word.

C Temp = 2.0, because it might choose less common words.

D Temp = 1.2, because it only selects the least likely word.

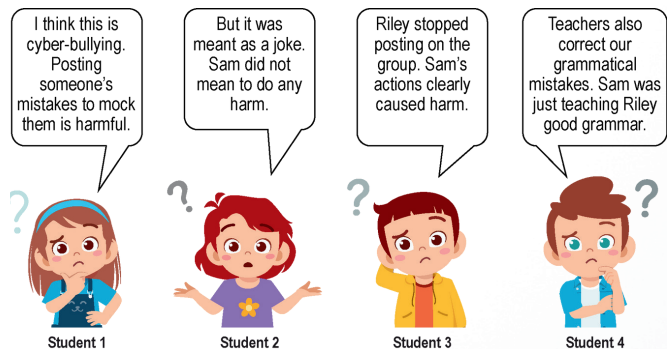
CORRECT ANSWER: Option C. **Explanation:** A temperature setting of 2 will drastically increase the chances of the model using uncommon words to create a poem.

Sample Question 3: Information & Media Literacy

Cyber-bullying is when someone uses chats or online posts to shame or hurt another person.

In a class group chat, Sam kept sharing screenshots of Riley's grammar mistakes with a "laughing" emoticon. Soon, Riley stopped posting on the group. Sam's actions clearly caused harm.

A few of their classmates discuss this situation:



Which classmates are correct as per good online behaviour in the class group chat?

A Student 1 only

B Student 1 and 3

C Students 2 and 4

D Students 1, 3 and 4

CORRECT ANSWER: Option B. **Explanation:** Students 1 and 3 correctly identify that posting others' mistakes to mock them is harmful cyber-bullying with real-world consequences.

What should assessments measure in the AI-age?



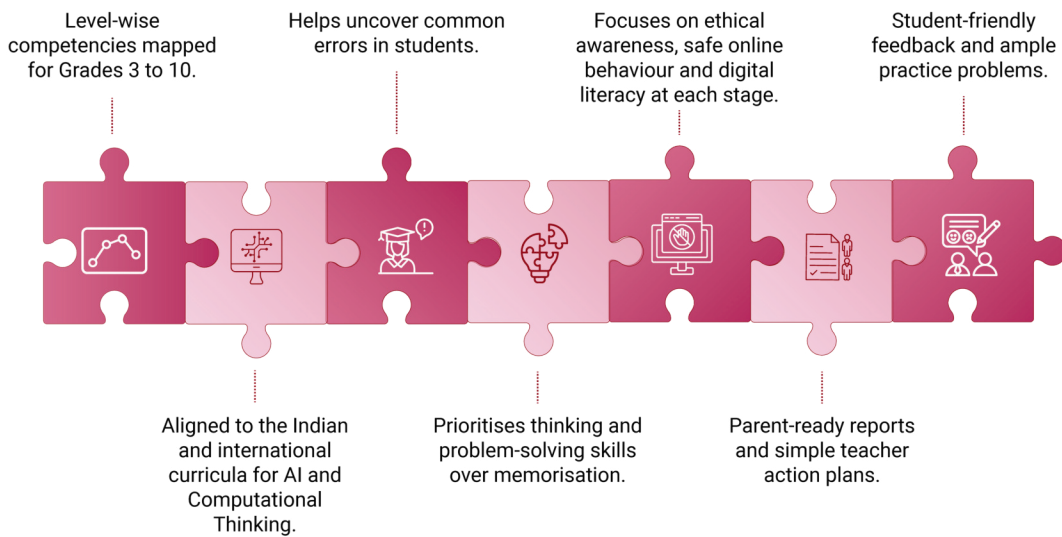
AI has changed how we solve problems, so assessments need to value thinking over recall. Classrooms that are memorising computer parts, shortcut keys and practising code that does not solve a real problem will be stuck in the past.

Information is easy to find; what matters is how a student uses it. The focus has shifted to breaking down problems, spotting patterns, analysing data, using AI to think and create faster, and understanding the ethical and social impacts of technologies. A new-age assessment should ask: can the child think clearly, reason with evidence, and solve a real task?

- Sridhar Rajagopalan, Co-Founder, Educational Initiatives



What Ei ASSET AI & Digital Thinking offers



Our Vision:

Creating a world where children everywhere are learning with understanding.

Our Mission:

We leverage the twin levers of cutting edge pedagogical research and technology based solutions, to help students across different economies and demographics, learn with understanding.

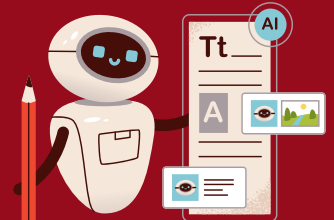
India

Bengaluru

The CUBE - Karle Town Center, 100 Ft, Nagavara, Bengaluru, Karnataka 560045

Ahmedabad

The First Building, Corporate House A2, 1st Floor, Nyay Marg, Vastrapur, Ahmedabad 380015



Educational Initiatives Pvt Ltd

[f /ei.study1](#) [in /eistudy](#) [tw /eistudy1](#) [yt /eivideos](#) [ig /eistudy1](#)

www.ei.study | info@ei.study | 080-471-87451
India | Africa | Middle East | S.E. Asia | USA



Scan to know more about our product